

FIND YOUR FOREVER HOME WITH US



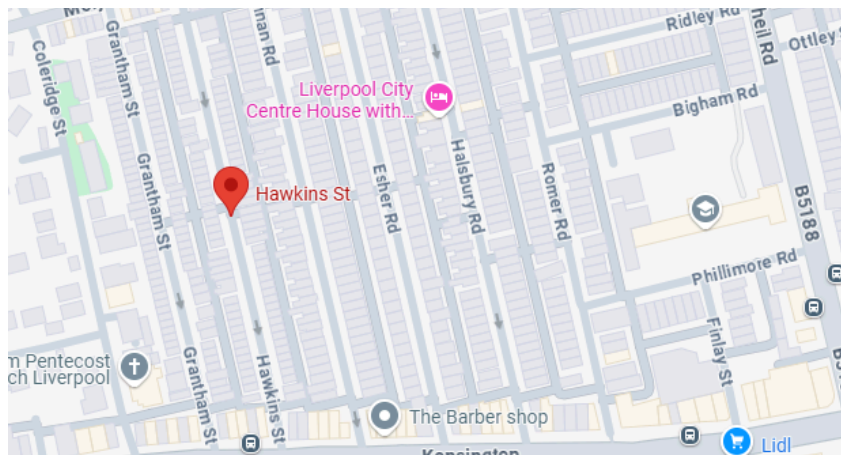
HAWKINS STREET, LIVERPOOL, L6

S&S

PROPERTY GROUP

invest | build | manage

Directions: L6 6BY



This Property CONSISTS OF



S&S Estates Property Group are pleased to bring to the rental market this recently refurbished two bedroom mid-terrace property, situated conveniently in the heart of Kensington, Liverpool and in modern walk in condition

This home has recently undergone a refurbishment and provides fabulous living accommodations, including a lovely modern kitchen, great living and dining space, lovely family bathroom, two good sized bedrooms, rear yard, and further benefits from gas central heating and is double glazed throughout.

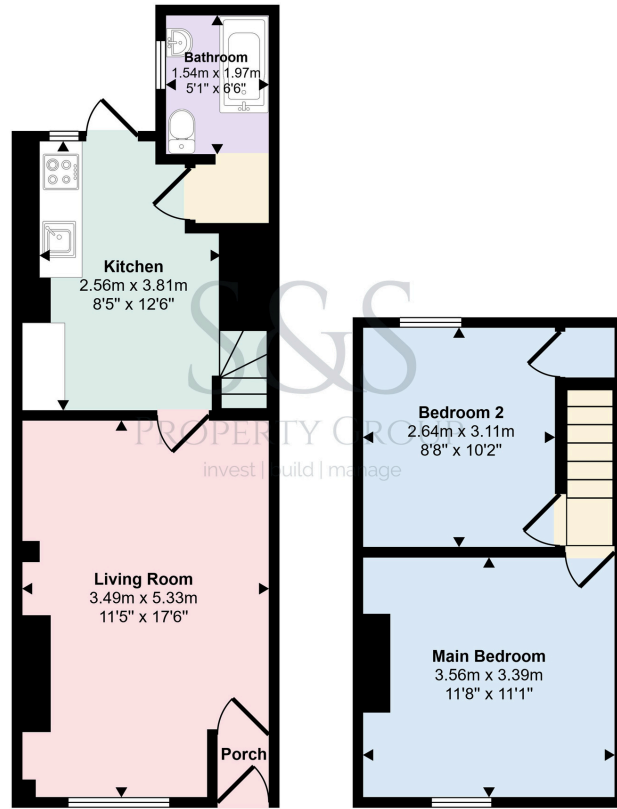
Ideally situated close to stores, schools and local community amenities, this property is in walk in condition and is available for immediate occupancy.

Rent: £800
Deposit: £800

PHOTOS



FLOOR PLAN



This floorplan is only for illustrative purposes and is not to scale. Measurements of rooms, doors, windows, and any items are approximate.

EPC

Score	Energy rating	Current	Potential
92+	A		
81-91	B		
69-80	C		78 C
55-68	D	62 D	
39-54	E		
21-38	F		
1-20	G		

Let's get in touch

78a Kings Road, M25 0FY
www.sands-group.co.uk
info@sands-group.co.uk
 0161 773 5309

S&S
 PROPERTY GROUP
 invest | build | manage